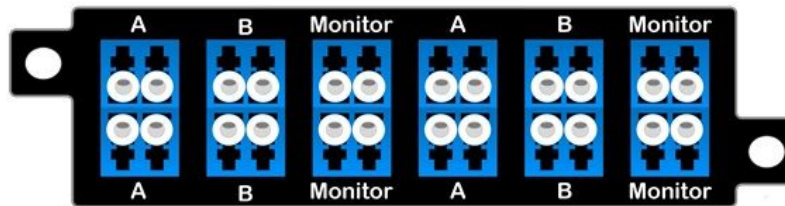


# Oxxyy4 Datasheet / Quickstart Guide

## Oxxyy4 Tap Overview

Optical LC TAP is **non-powered device** independent on data rate and supporting **10/100/1000 and 10GB** Ethernet, ATM, SONET, FDDI etc. It is easy to install, tolerant to mistakes and transparent to the network. The TAP separates data flows for half-duplex directional monitoring. Ideal when utilization is very high and **packet loss is not an option**.

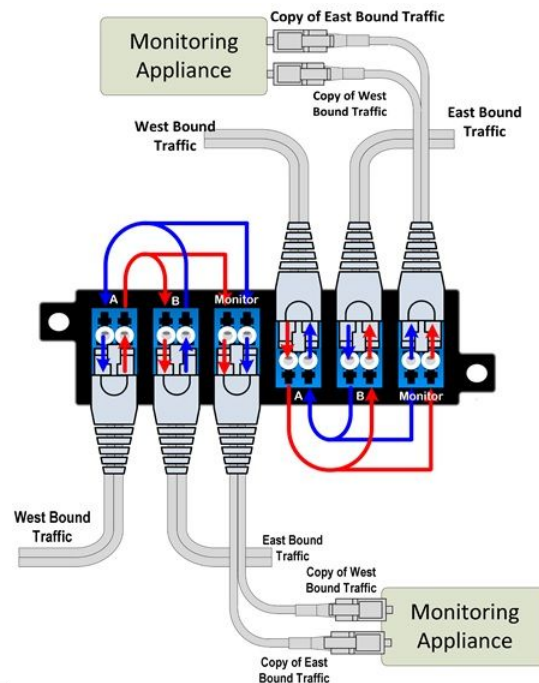
### Quad Fiber TAP Chassis Oxxyy4



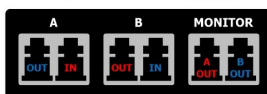
- **Type of fiber:** xx (Oxxyy1) M1 = MM 62,5/125µm; M3 = MM 50/125µm; S1 = SM 9/125µm.
- **Dividing ratio:** yy (Oxxyy1) 50 = 50/50%; 70 = 70/30%.
- **Connectors:** LC.

## Quad TAP Module Installation

- **Port A** is a full-duplex fiber tap port that should be connected to one of the two network devices where network monitoring is desired.
- **Port B** is a full-duplex fiber tap port that should be connected to the other side or adjacent network monitoring is desired.
- The **MONITOR** port is a dual-simplex directional port (both sides are output only) which should be connected to the input or receive only side of two interfaces of any monitoring devices(s) that will collect the tapped traffic.



Fiber Tap Port Relationship **Top Row**



Fiber Tap Port Relationship **Bottom Row**

